



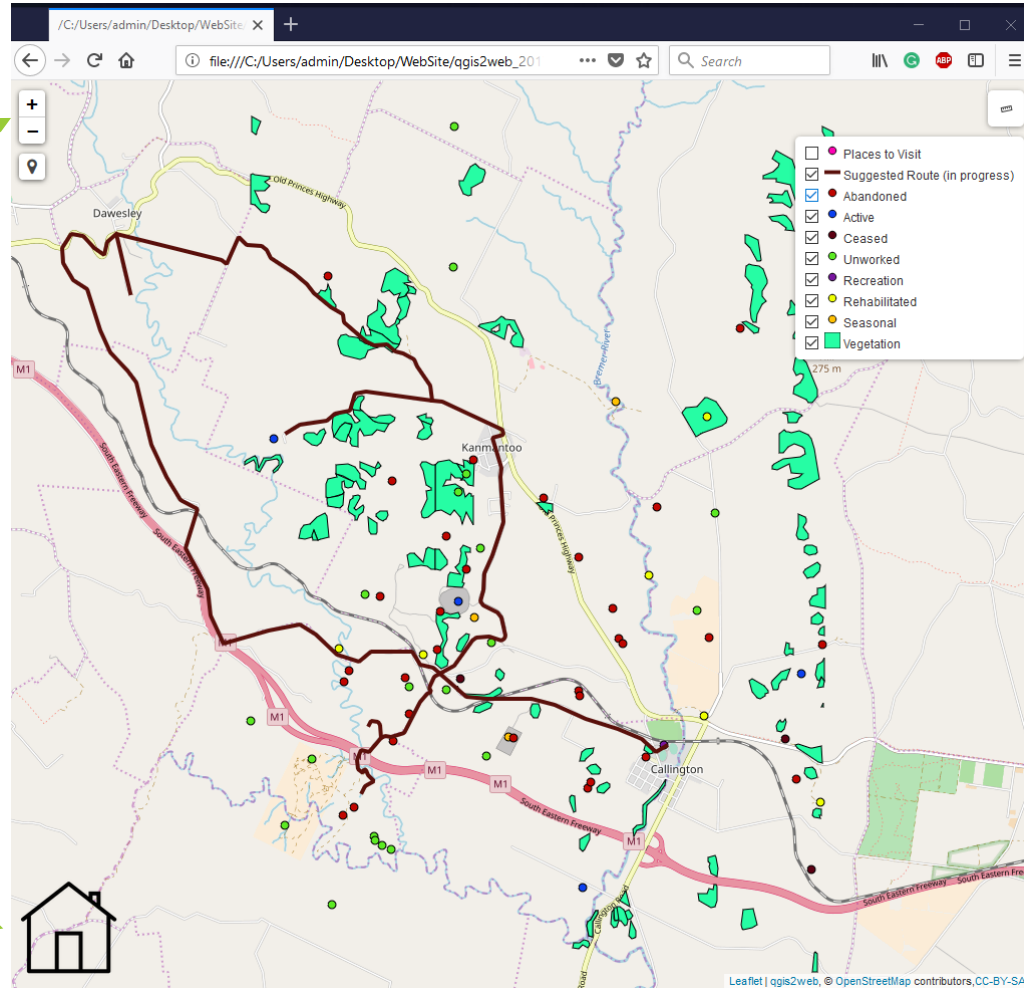
# WEB MAP FOR K4C

Sophie-Min Thomson

# GENERAL OVERVIEW

2. Zoom in and out buttons as well as a geolocator button

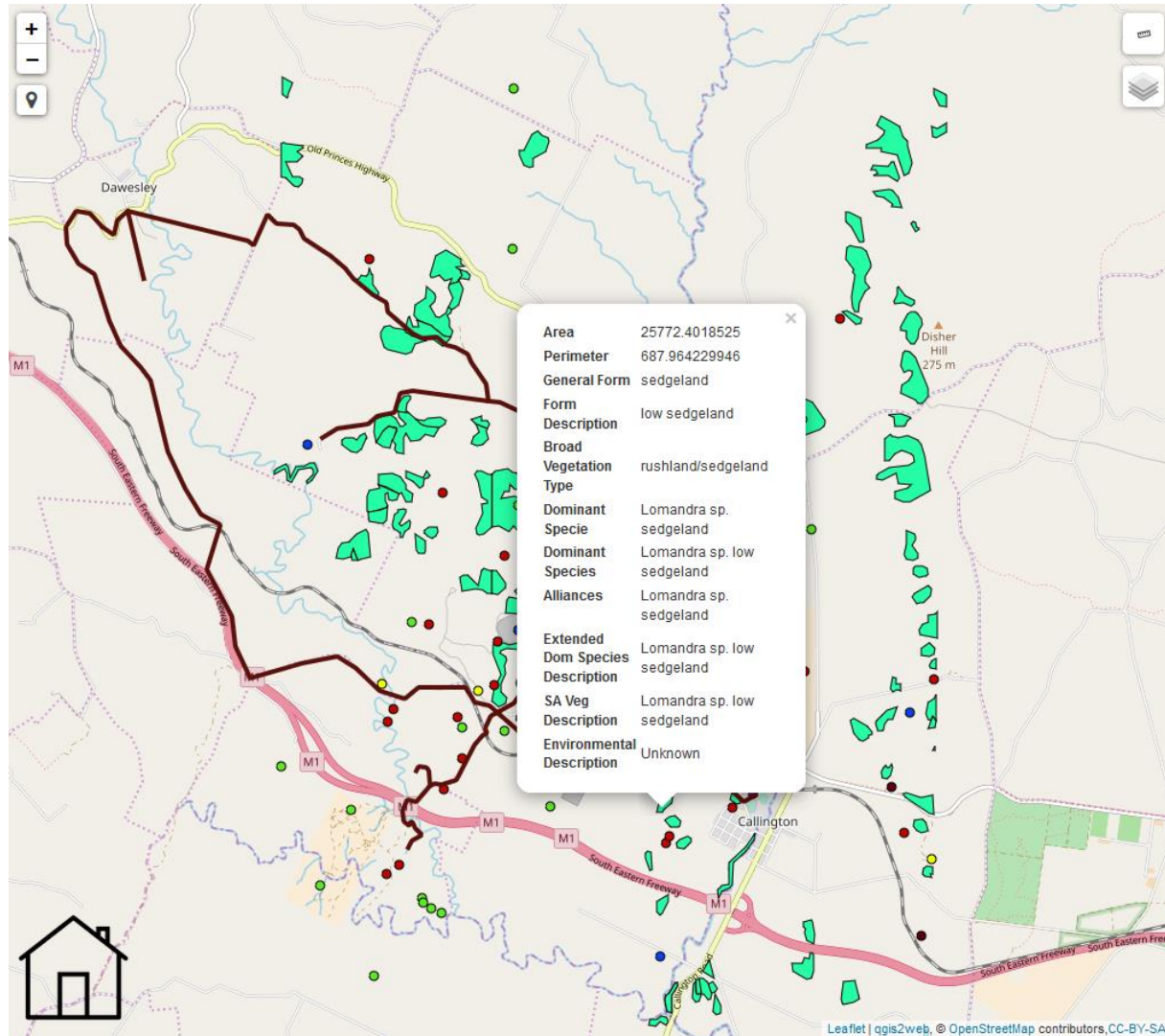
1. Home button to host website – Hillgrove Resources etc.



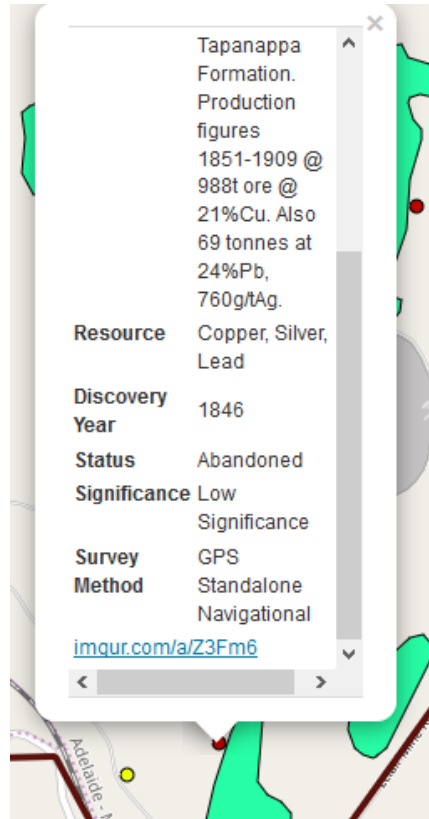
3. Measure tool, similar to google earth feature

4. Legend, allows the user to turn off and on layers as needed

# QUERY ON A VEGETATION PLOT



# CLICKING ON AN ABANDONED MINE SITE (RED DOT)



A screenshot of a map interface with a data popup window. The popup contains the following information:

- Tapanappa Formation.** Production figures 1851-1909 @ 988t ore @ 21%Cu. Also 69 tonnes at 24%Pb, 760g/tAg.
- Resource** Copper, Silver, Lead
- Discovery Year** 1846
- Status** Abandoned
- Significance** Low Significance
- Survey** GPS
- Method** Standalone Navigational

At the bottom of the popup is a link: [imgur.com/a/Z3Fm6](https://imgur.com/a/Z3Fm6)



**Paringa Mine**

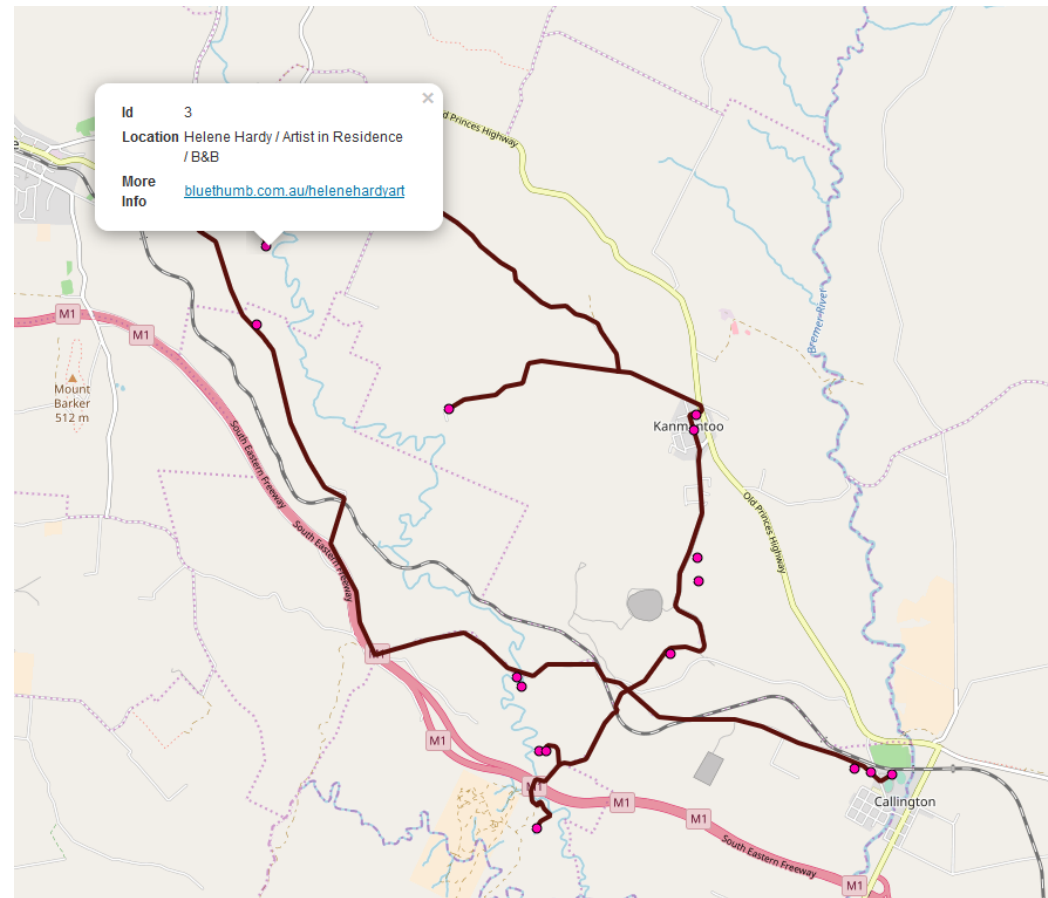
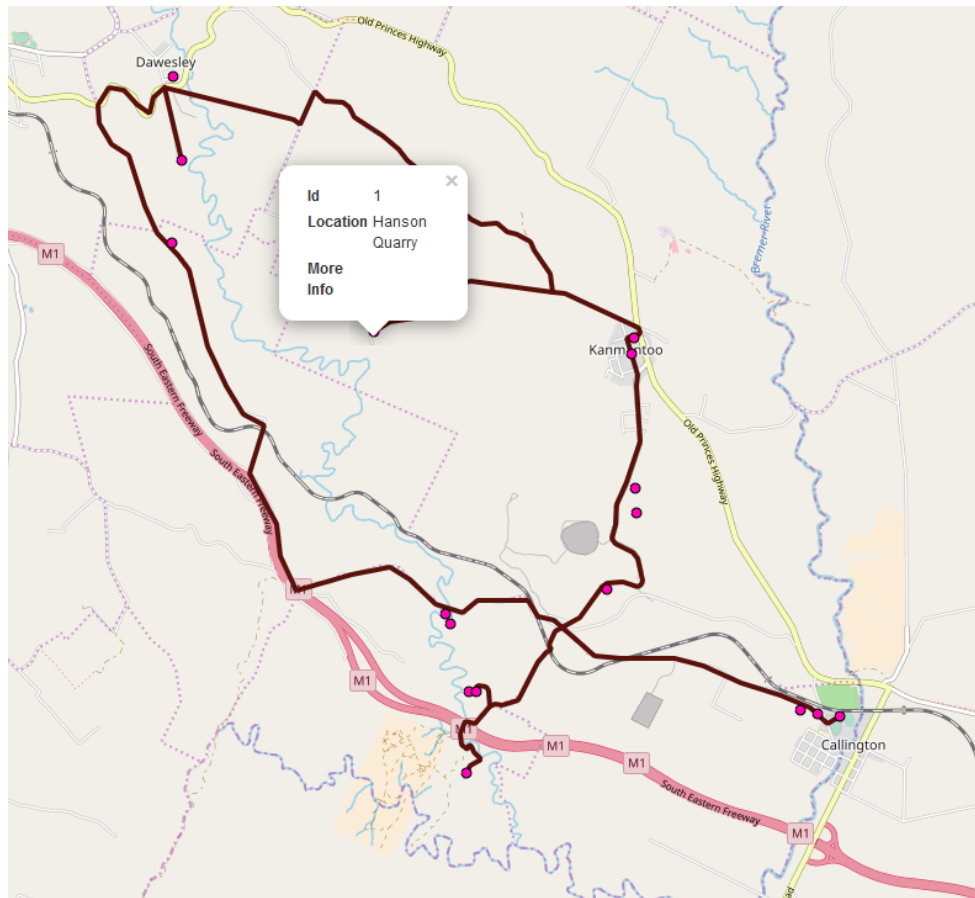
A black and white historical photograph of the Paringa Mine site. The image shows a tall, narrow brick chimney stack on the left, a wooden structure with a hopper in the center, and a large, rounded hill in the background. The foreground is a flat, dusty area with some debris.

B 19925

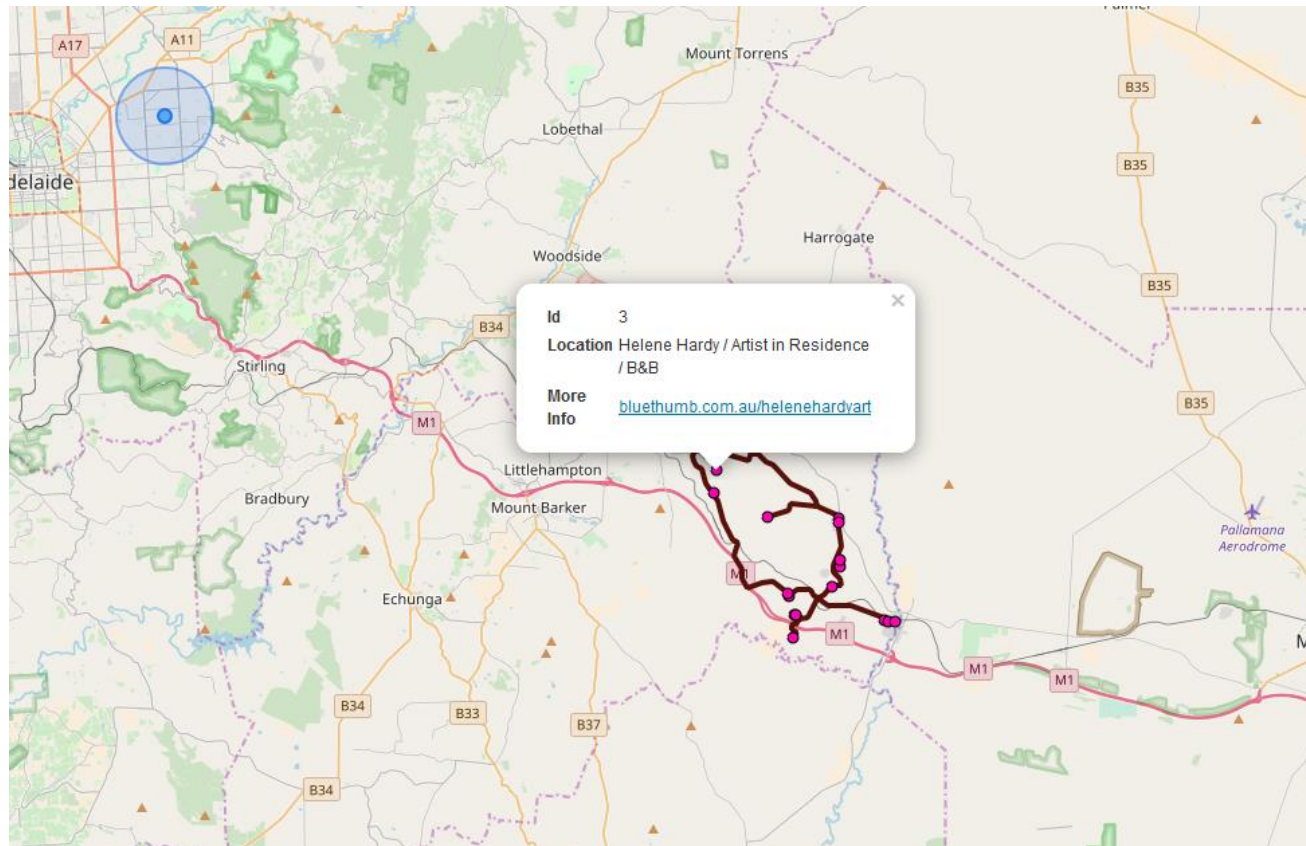
State Library of South Australia - Paringa Mine, Callington [B 19925] • Photograph

<https://collections.slsa.sa.gov.au/resource/B+19925>

# THE TOURIST TRAIL



# EXAMPLE OF GEOLOCATION



# SUMMARY

- The web map shows the potential for the tourist trail, allowing users to take themselves on a mining heritage adventure through the Adelaide Hills
- Things that I could add include nice lunch/dinner/brunch/breakfast places, more photos, Harry's Family History Projects, a neater road map trail (will take a bit of time) and any other community suggestions
- To be completed is detailed instructions on how this was all completed so that information in the future can be added to it by any person with access
- A location to host the web map (this current version is hosted locally (ie no internet access is required but all the files are required))